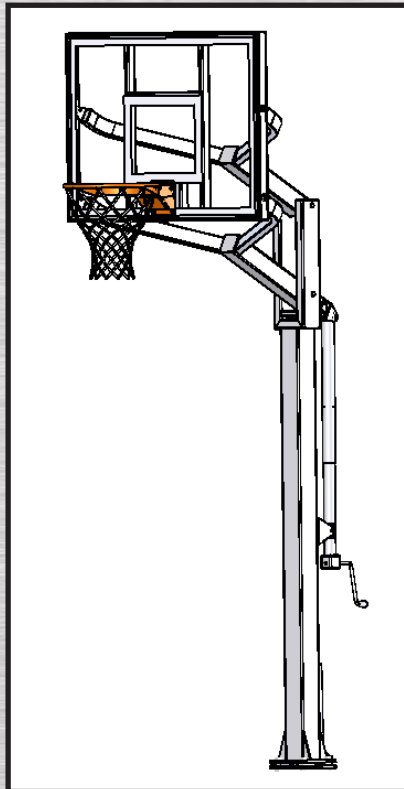




In-Ground Basketball System Owners Manual



WARNING!

PLEASE ENSURE
that (4) steel spacers
are in place between
Board Frame and Rim
Prior to tightening bolts.
(SEE PAGE 15)

FAILURE TO FOLLOW OPERATING
INSTRUCTIONS COULD RESULT IN
INJURY OR DAMAGE TO PROPERTY.

Adult Assembly Required.

This manual, accompanied by sales receipt, should be saved and kept on hand as a convenient reference,
as it contains important information about your model.

**Write Model Number
From Box Here:**



WARNING!

READ AND UNDERSTAND OPERATOR'S
MANUAL BEFORE USING THIS UNIT.

FAILURE TO FOLLOW OPERATING
INSTRUCTIONS COULD RESULT IN
INJURY OR DAMAGE TO PROPERTY.

Toll-Free Customer Service Number for U.S: **1-800-558-5234** Australia Customer Service: **1300 367 582**
Internet Address: <http://www.spalding.com> www.spalding.com.au

SAFETY INSTRUCTIONS

FAILURE TO FOLLOW THESE SAFETY INSTRUCTIONS MAY RESULT IN SERIOUS INJURY, PROPERTY DAMAGE AND WILL VOID WARRANTY.

Owner must ensure that all players know and follow these rules for safe operation of the system.

To ensure safety, do not attempt to assemble this system without following the instructions carefully. Proper and complete assembly, use and supervision is essential for proper operation and to reduce the risk of accident or injury. A high probability of serious injury exists if this system is not installed, maintained, and operated properly. Check entire box and inside all packing material for parts and/or additional instructional material. **Before beginning assembly, read the instructions and identify parts using the hardware identifier and parts list in this document.**

- If using a ladder during assembly, use extreme caution.
- Three (3) capable adults are recommended for this operation.
- Before digging, contact utility company to locate underground power cables, gas, and water lines. Ensure there are no overhead power lines within 20 ft. (7 m) radius of pole location.
- Climate, corrosion, excessive use, or misuse could result in system failure.
- If technical assistance is required, contact Customer Service.
- Minimum operational height is 6'6" (1.98 m) to the bottom of backboard.
- This equipment is intended for home recreational use only and NOT excessive competitive play.
- Read and understand the warning label affixed to pole.
- The life of your basketball pole depends on many conditions. The climate, placement of the pole, the location of the pole, exposure to corrosives such as pesticides, herbicides or salts are all important.
- Adult supervision is recommended when adjusting height.
- Serious injury could occur if teeth/face come in contact with backboard, net, or rim.

Most injuries are caused by misuse and/or not following instructions. Use caution when using this system.

For more information on assembly, placement, proper use and maintenance, visit The American Basketball Council website at <http://www.smarthoops.com>.

WARNING



Read and understand warnings listed below before using this product.

Failure to follow these warnings may result in serious injury and/or property damage.

Owner must ensure that all players know and follow these rules for safe operation of the system.

- DO NOT HANG on the rim or any part of the system including backboard, support braces or net.
- During play, especially when performing dunk type activities, keep player's face away from the backboard, rim and net. Serious injury could occur if teeth/face come in contact with backboard, rim or net.
- Do not slide, climb, shake or play on base and/or pole.
- When adjusting height or moving system, keep hands and fingers away from moving parts.
- Do not allow children to move or adjust system.
- During play, do not wear jewelry (rings, watches, necklaces, etc.). Objects may entangle in net.
- Keep organic material away from pole base. Grass, litter, etc. could cause corrosion and/or deterioration.
- Check pole system for signs of corrosion (rust, pitting, chipping) and repaint with exterior enamel paint. If rust has penetrated through the steel anywhere, replace pole immediately.
- Check system before each use for proper ballast, loose hardware, excessive wear and signs corrosion and repair before use.
- Check system before each use for instability.
- Never play on damaged equipment.
- Keep pole top covered with cap at all times.
- See instruction manual for proper installation and maintenance.

SPALDING

In the U.S.: 1-800-558-5234
In Canada: 1-800-284-8339
In Australia: 1-300-367-582

SURE SHOT

In the U.S.: 1-800-558-5234

RUSSELL

Trademarks registered
in the USA and other countries.
ID#: 58800001 02/12

HYDRA-RIB

In the U.S.: 1-800-334-9111

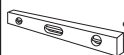
HUFFY SPORTS

In the U.S.: 1-800-558-5234
In Canada: 1-800-284-8339

REQUIRED TOOLS AND MATERIALS:



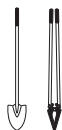
• 3 Capable Adults



• Carpenter's Level



• 15' Tape Measure



• Shovel & Post Hole Digger



• Wood Board (scrap)



• (2) Stepladders
8 ft. (2.4 m)



• Safety Goggles

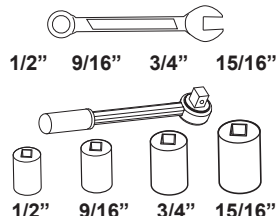


• (1) Utility Knife

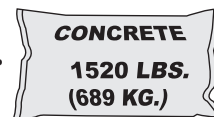
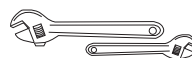


• Phillips-Head Screwdriver

• (2 each) Wrenches and/or Socket Wrenches and Sockets (Deep-Well Sockets are Recommended).



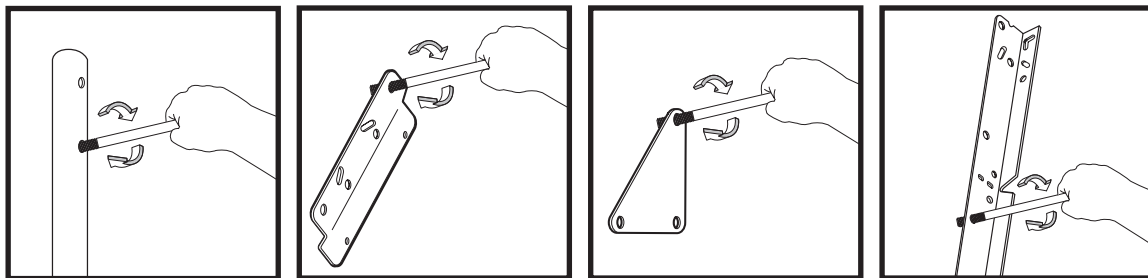
• Optional: Large & Small Adjustable Wrenches



• Container to Mix



BEFORE YOU START!



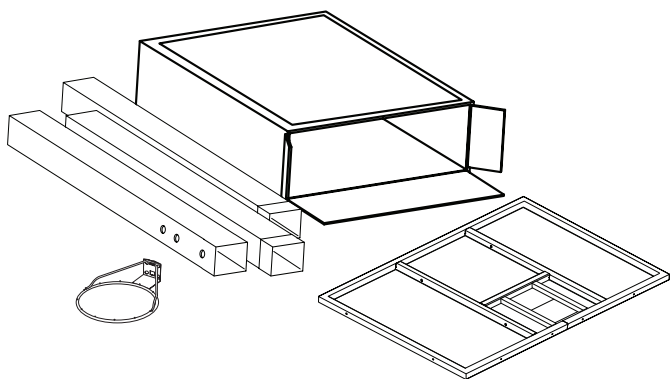
To ensure optimal playability of backboard system, a close tolerance fit between the elevator components and hardware is required. Test-fit large bolts into large holes of elevator tubes, backboard brackets, and triangle plates. Carefully rock them in a circular motion to ream out any excess paint from holes if necessary.

Not all items pictured are included with every model.

NOTICE TO ASSEMBLERS

Adult Assembly Required. Dispose of ALL packaging materials promptly. As with all products, periodically inspect for loose small parts.

ALL basketball systems, including those used for DISPLAYS, MUST be assembled and installed according to instructions. Failure to follow instructions could result in SERIOUS INJURY. It is NOT acceptable to devise a makeshift support system.



IMPORTANT!

**Remove all contents from boxes.
Be sure to check inside pole sections,
hardware and additional parts are packed inside.**



Questions or Missing Parts?

DON'T go back to the store!

Call TOLL-FREE Customer Service
number listed on the front page!



WARNING!



IF YOUR SYSTEM IS EQUIPPED WITH AN ACRYLIC BACKBOARD, EXAMINE BACKBOARD FOR ANY DAMAGE THAT MAY HAVE OCCURRED DURING SHIPMENT. CRACKS IN THE BACKBOARD COULD RESULT IN SUDDEN BREAKAGE. IF BACKBOARD IS DAMAGED IN ANY WAY PRIOR TO OR AFTER ASSEMBLY, CALL TOLL-FREE NUMBER: U.S. 1-800-334-9111 Internet Address: www.spalding.com



Basketball System Warranty

**For the very latest Basketball System Warranty information
Please visit the Spalding Basketball website at www.Spalding.com**

Contact Spalding Customer Service at phone # 1-800-558-5234

Système de basket-ball garantie

**Pour l'information de garantie de système de basket-ball plus tard
Visitez le site Web de Spalding Basketball à www.Spalding.com**

Contacter le Service clientèle Spalding au # de téléphone 1-800-558-5234

Basketball-System Garantie

**Die neuesten Basketball System-Garantie informationen
Besuchen Sie bitte die Spalding Basketball-Website unter www.Spalding.com**

Spalding-Kundendienst am Telefon # 1-800-558-5234

Sistema de baloncesto Garantía de dueños

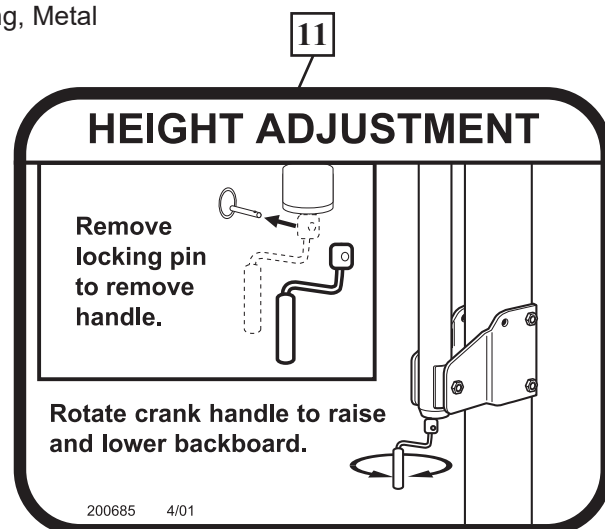
**Para la última información de garantía del sistema de baloncesto
Por favor visite el sitio web de Spalding Basketball en www.Spalding.com**

Póngase en contacto con servicio al cliente de Spalding en teléfono # 1-800-558-5234

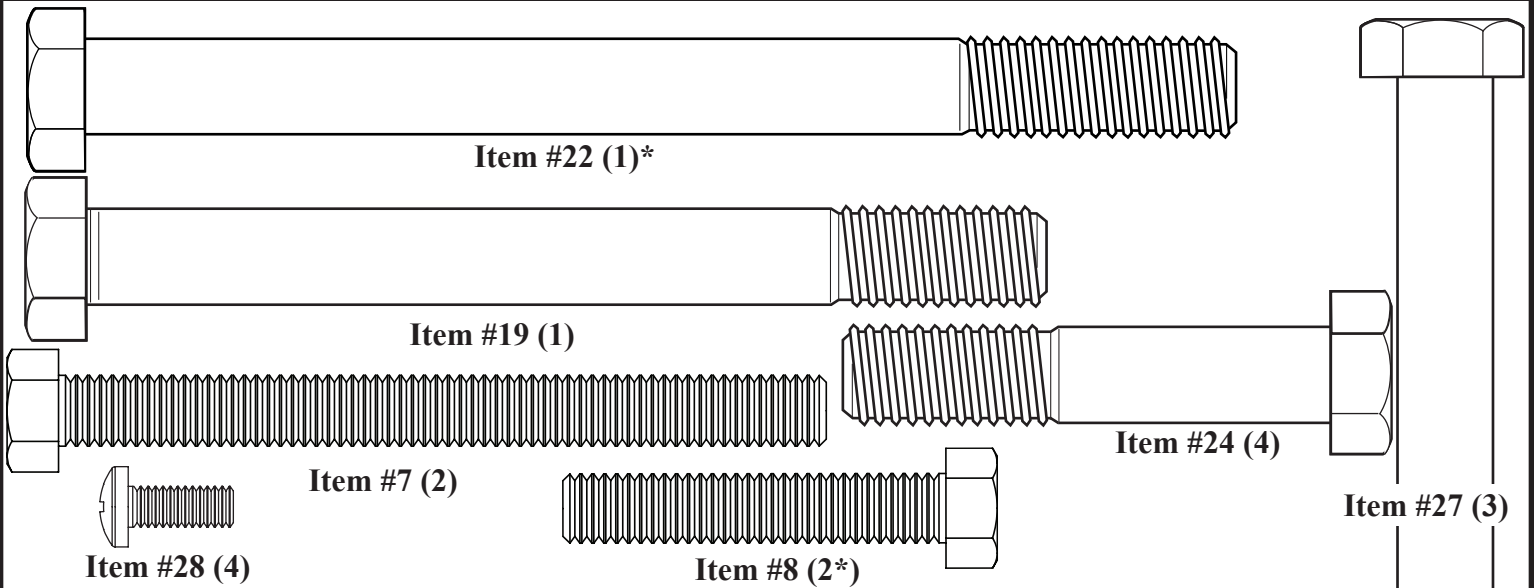
PARTS LIST - See Hardware Identifier

<u>Item</u>	<u>Qty.</u>	<u>Part No.</u>	<u>Description</u>
1	1	958860C	Pole
2	1	908265	Tube, Ground Anchor, Black
3	1		Rim Assembly
4	1		Net
5	4	208955	Nut, Hex, 3/8-16
6	4	208956	Washer, 3/8 Locking, .380 I.D., .63 O.D.
7	2	208965	Bolt, Hex, Tap, 3/8-16 x 4" Long
8	2*	250002	Bolt, Hex, Tap, 3/8-16 x 2" Long
9	8	265575	Nut, Hex, 5/8-11, Zinc
10	3	204993	Rebar, .5" diameter, 18" Long
11	1	200685	Label, Height Adjustment
12	1	204940	Screw Jack
13	1	701299	Rod, Threaded Assembly, 5/8-11 x 19.8", Zinc
14	1	204922	Pin, Hitch
15	1		Cover, Rim
16	1	978880C	Yoke, Upper, Center, Pole
17	1	988880C	Yoke, Lower, Center, Pole
18	1		Backboard, Glass
			Backboard, Acrylic
19	1	208954	Bolt, Hex, 1/2-13 x 5, Zinc
20	16	208953	Washer, Flat, .053 I.D., 1.08 O.D.
21	9*	208961	Nut, Lock, Nylon Insert, 1/2-13,
22	1*	208963	Bolt, Hex Head, 1/2"-13 x 6",
23	9	200704	Washer, 5/8 Flat, .656 I.D., 1.313 O.D.
24	4	208960	Bolt, Hex, 1/2-13 x 2.5
25	1	205008	Nut, Hex, 5/8-11
26	4*	208957	Washer, Flat, 3/8"
27	3	208964	Bolt, Hex, 1/2-13 x 9.25
28	4	204733	Screw, #8, .50 Long
29	2	204735	Height Indicator
30	1	204741	Label, Height Indicator, Right
31	1	204742	Label, Height Indicator, Left
32	2*	206311	Spacer, .52 I.D. x .75 O.D. x .5" Long, Plastic
33	1	204923	Pin, Cotter, #8
34	1	204921	Washer, Barrel
35	1	204669	Spacer, .51 ID x .75 OD x 4.00 Long, Metal
36	4	208484	Spacer, Metal
37	1	205794	Pad, Foam

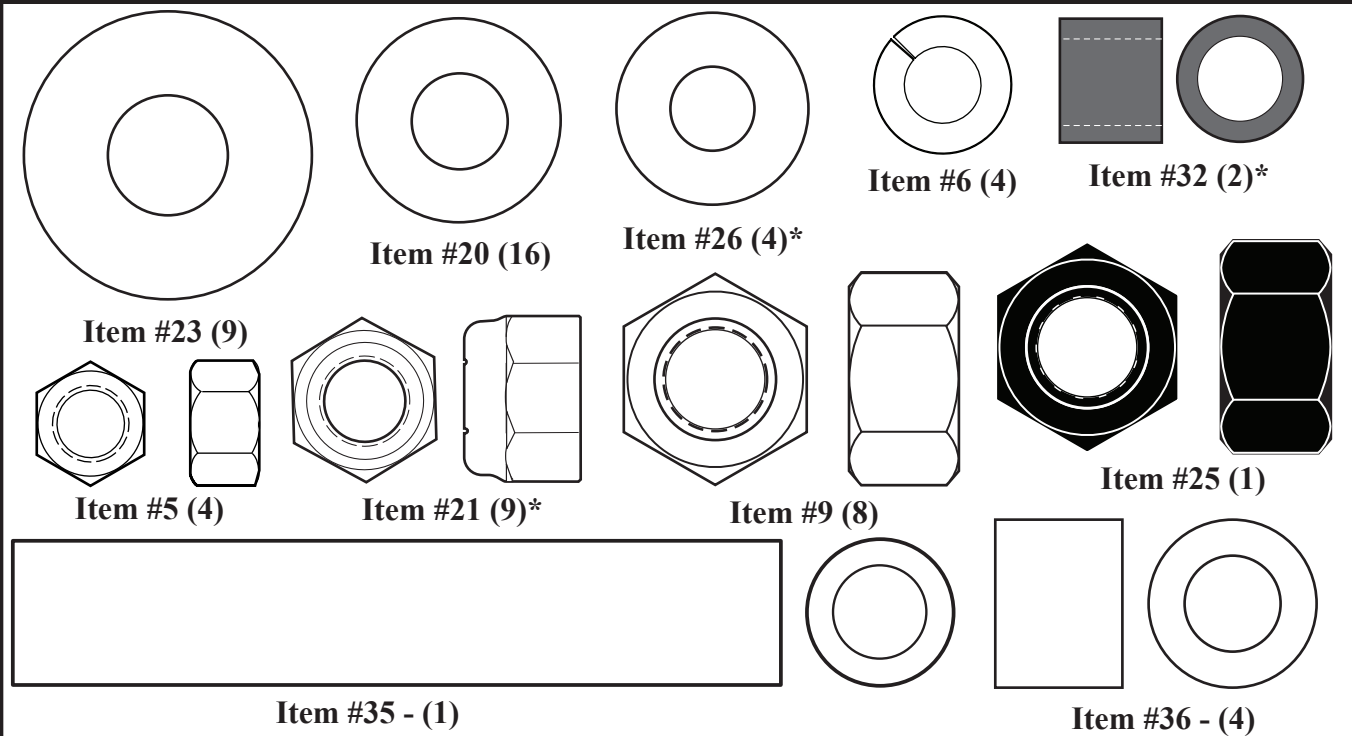
* You may have extra parts with this model.



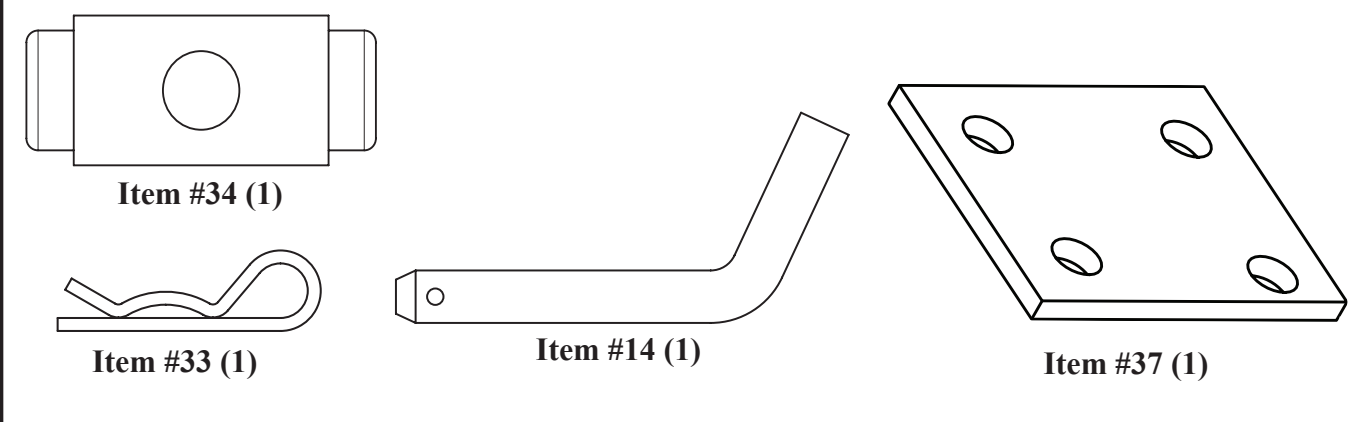
HARDWARE IDENTIFIER (Bolts and Screws)



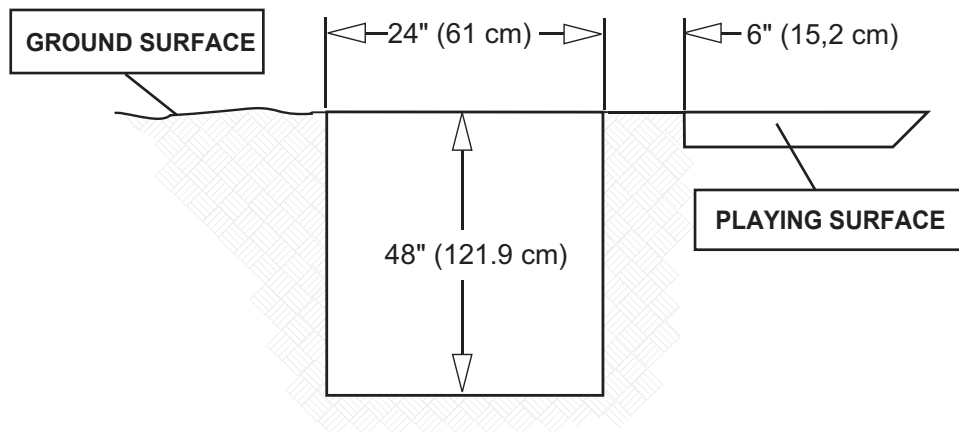
HARDWARE IDENTIFIER (Nuts, Washers and Spacers)



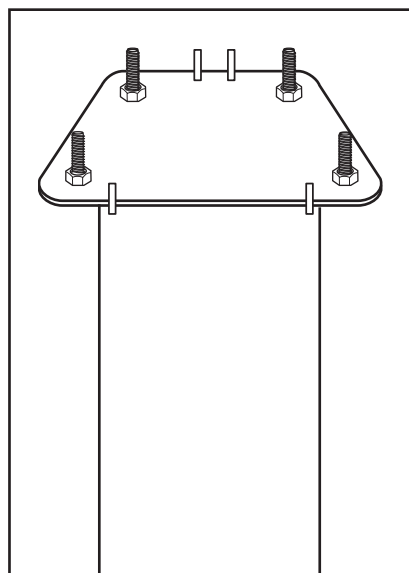
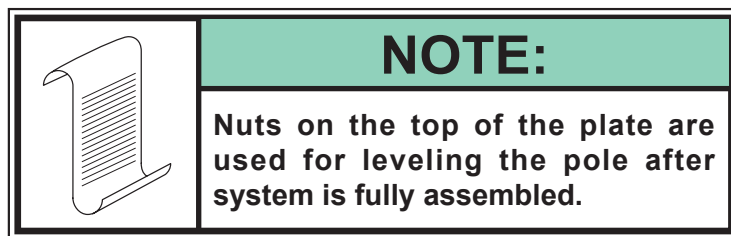
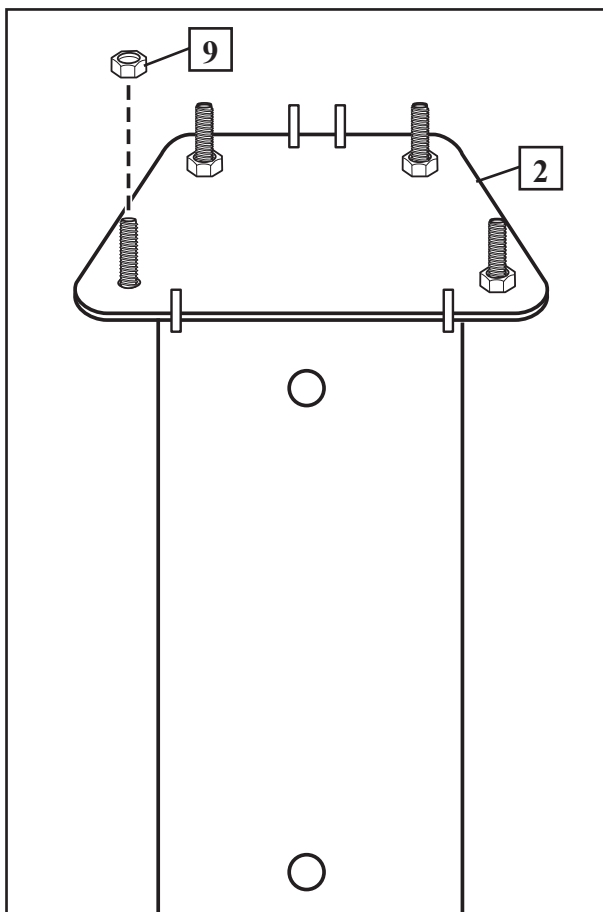
HARDWARE IDENTIFIER (Other - Not Actual Size)



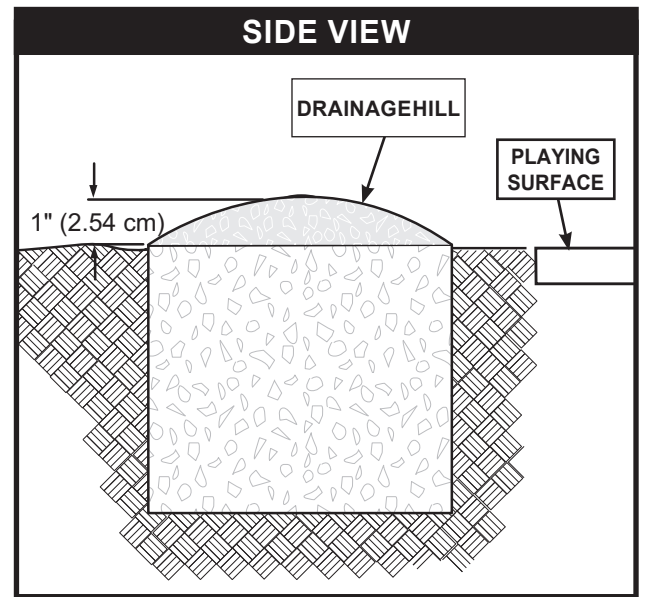
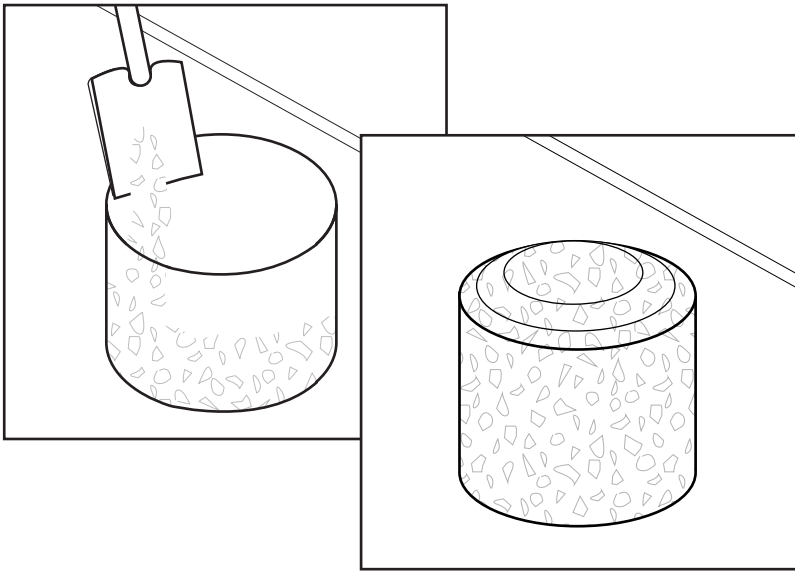
1. Ensure ground is level with playing surface, then dig pole hole.



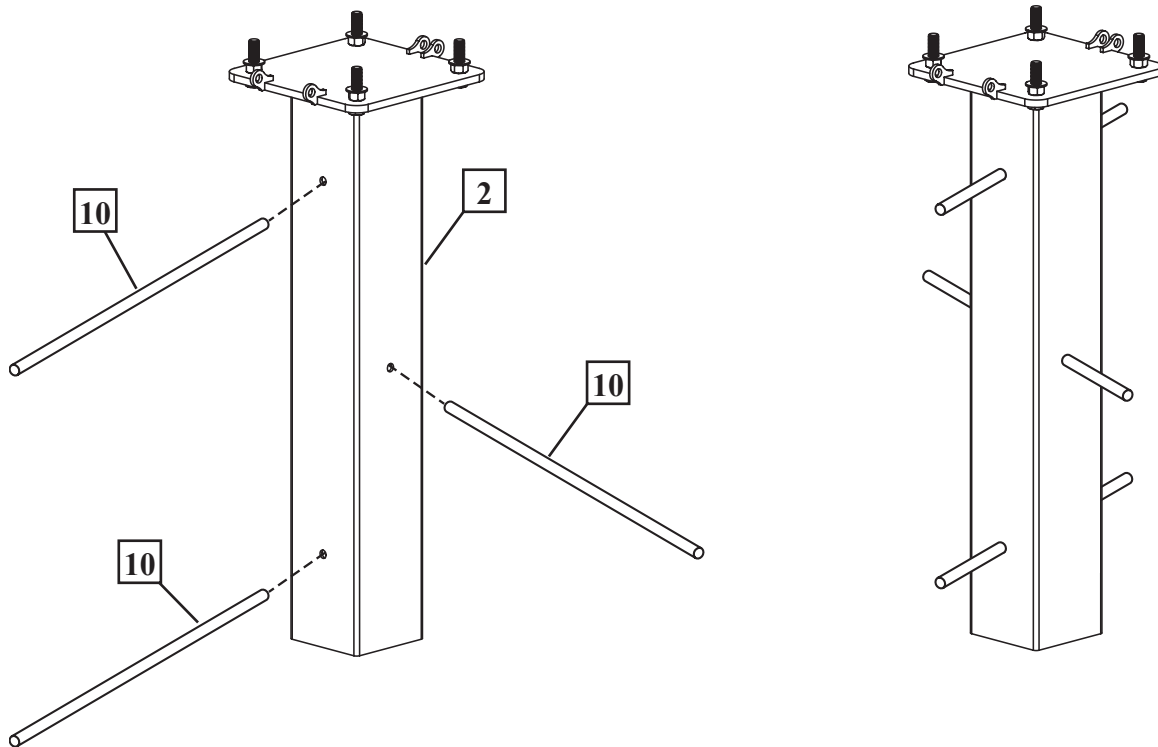
2. Install nuts (9) onto the ground tube (2) bolts as shown.



3. Fill hole with concrete. Tamp down concrete to release air pockets and build drainage hill.



4. Insert rebar (10) through holes in ground tube assembly (2) as shown.



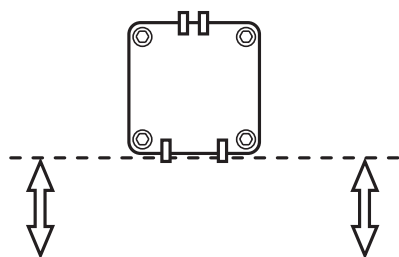
- 5.** Insert ground tube assembly (2) into wet cement as shown. Move assembly around to release any air pockets in cement, then rest mounting plate on top of cement drainage hill. Apply some pressure to level mounting plate on top of drainage hill. Level mounting plate and square with playing surface. Clean off any excess cement on mounting plate at this time and place washers (23) on mounting bolts.



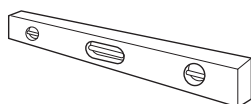
IMPORTANT!

NOTE ORIENTATION

Front of mounting plate
must be parallel with
playing surface.

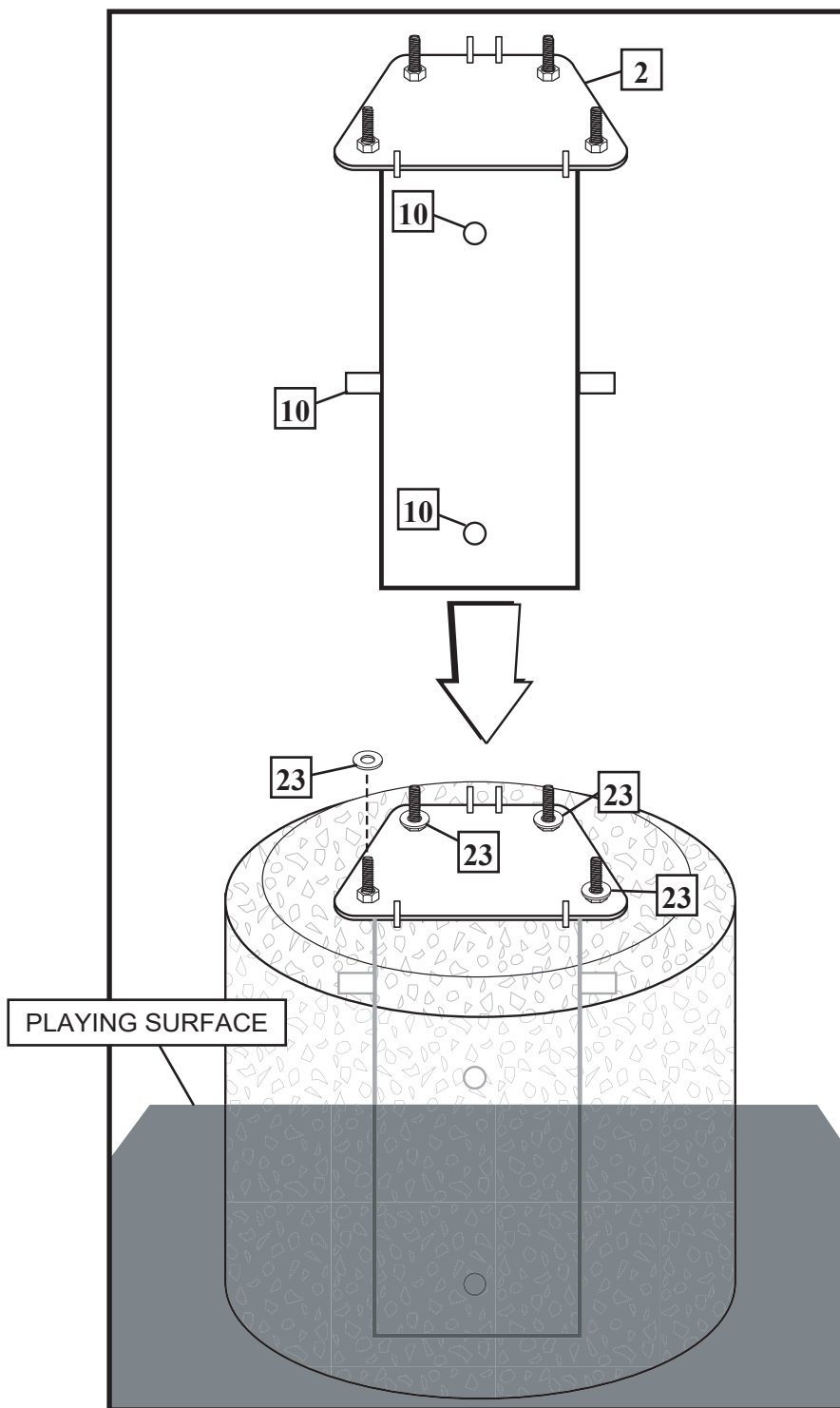


PLAYING SURFACE



IMPORTANT!

Check leveling of mounting plate
several times with carpenter's
level while concrete is curing.



IMPORTANT!: WAIT A MINIMUM OF 72 HOURS BEFORE GOING ON TO NEXT STEP. CONCRETE MUST CURE. ALLOW ADDITIONAL TIME FOR COLD, WET OR HUMID WEATHER.

6. ●

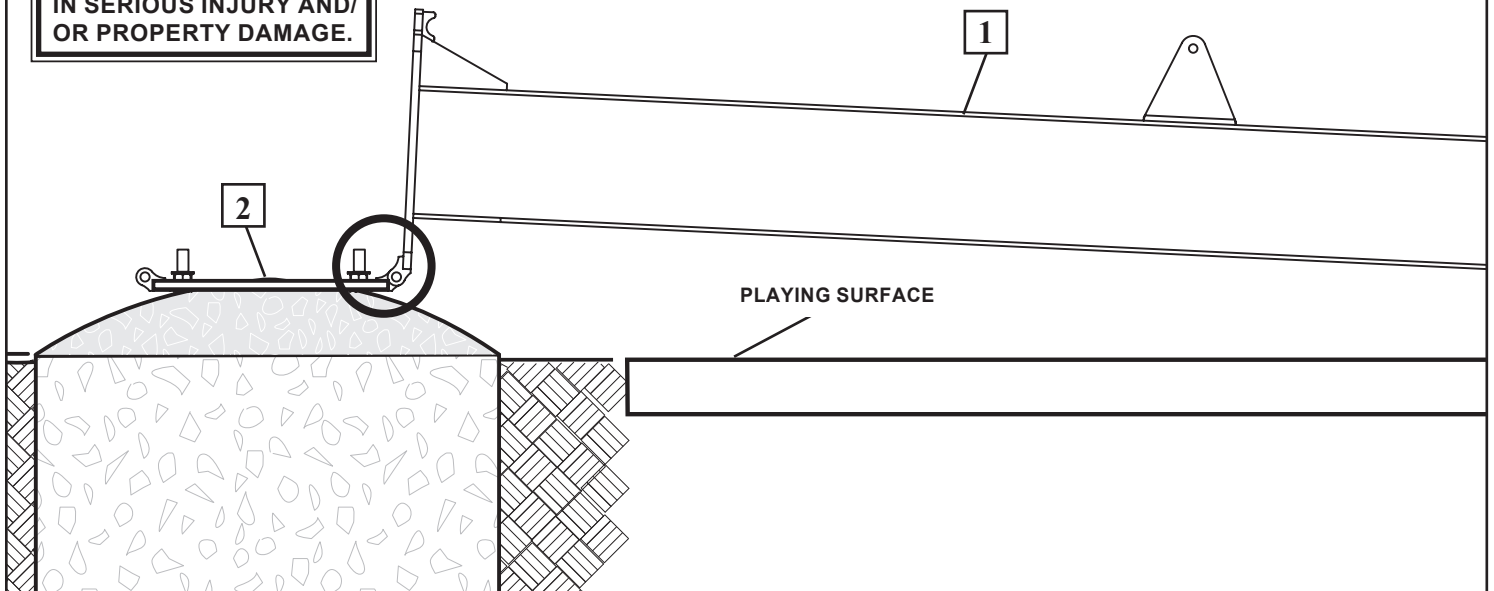
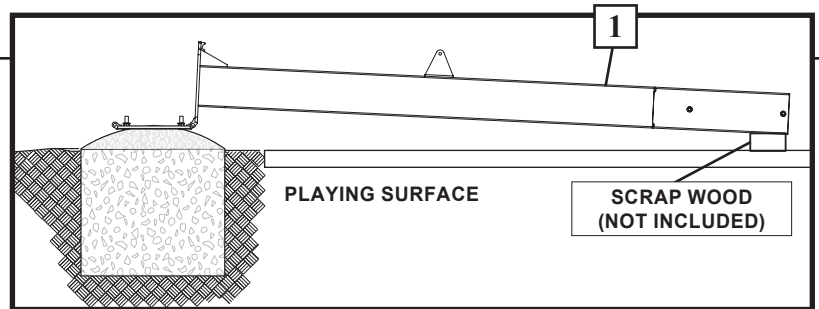
Rest top of pole (1) on a piece of scrap wood (not included) and line up holes in pole to holes in mounting plate as shown.

A. ●

! WARNING!

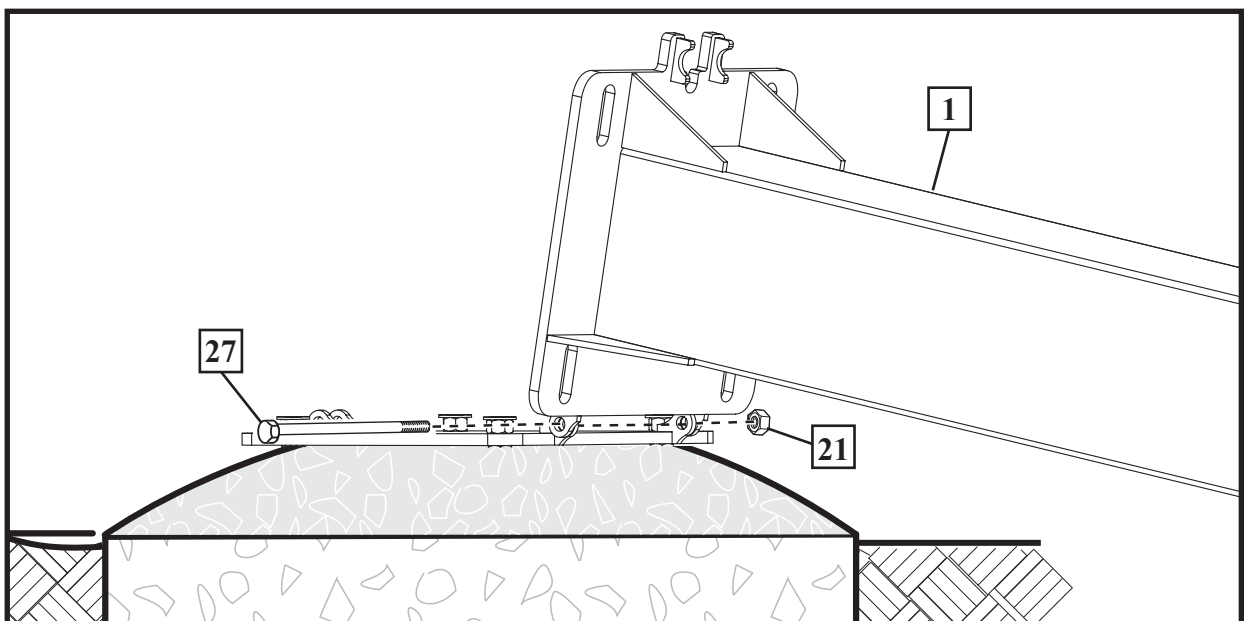


THREE CAPABLE ADULTS
REQUIRED FOR THIS
PROCEDURE. FAILURE
TO FOLLOW THIS
WARNING COULD RESULT
IN SERIOUS INJURY AND/
OR PROPERTY DAMAGE.



B. ●

Insert bolt (27) through holes in plate and pole (1) and secure with nut (21).



TWO capable adults are required to lift pole into position so that the threaded assembly rod (13) can be installed and secured by the **THIRD** capable adult.

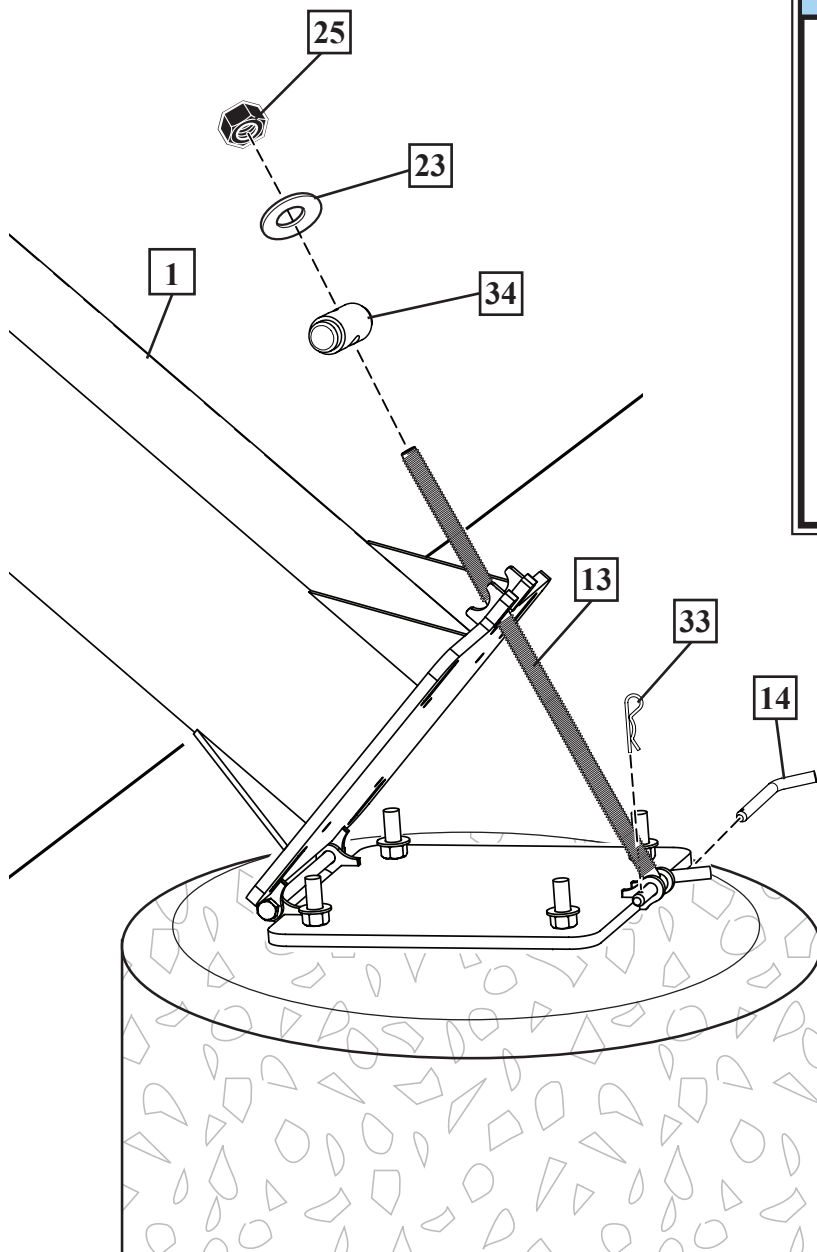
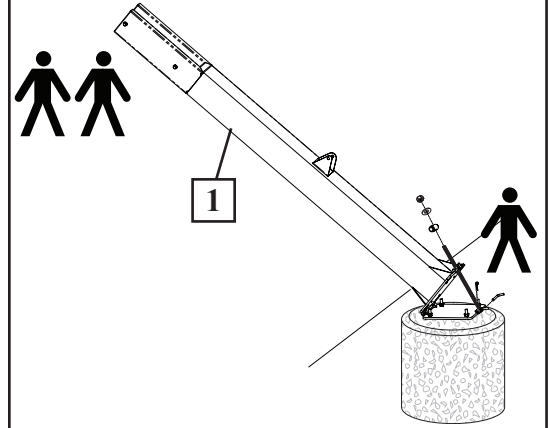
While pole is being supported by **TWO** capable adults, position rod (13) and lock into place with hitch pin (14) and cotter pin (33).

Slide barrel washer (34) onto other end of rod (13) and secure with washer (23) and nut (25). Tighten nut (25) until it is positioned at 3-3/4" from the end of the rod (13) as shown (**Figure A**).

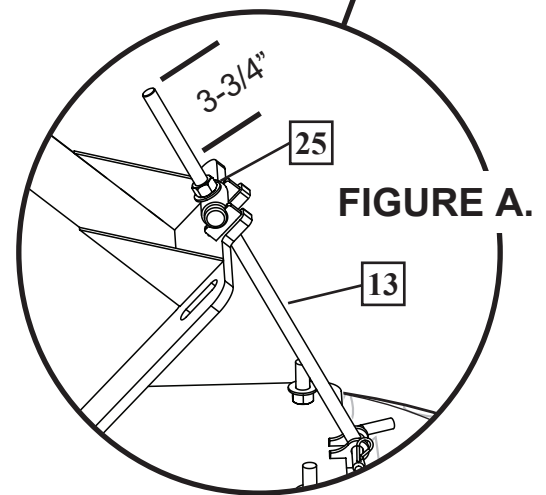
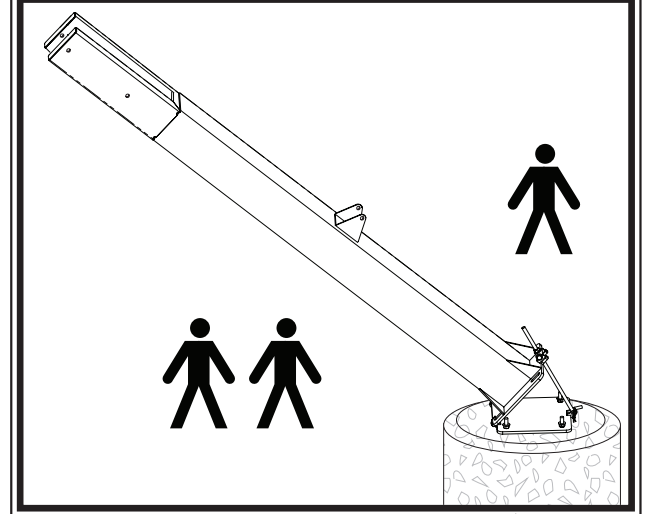
WARNING!



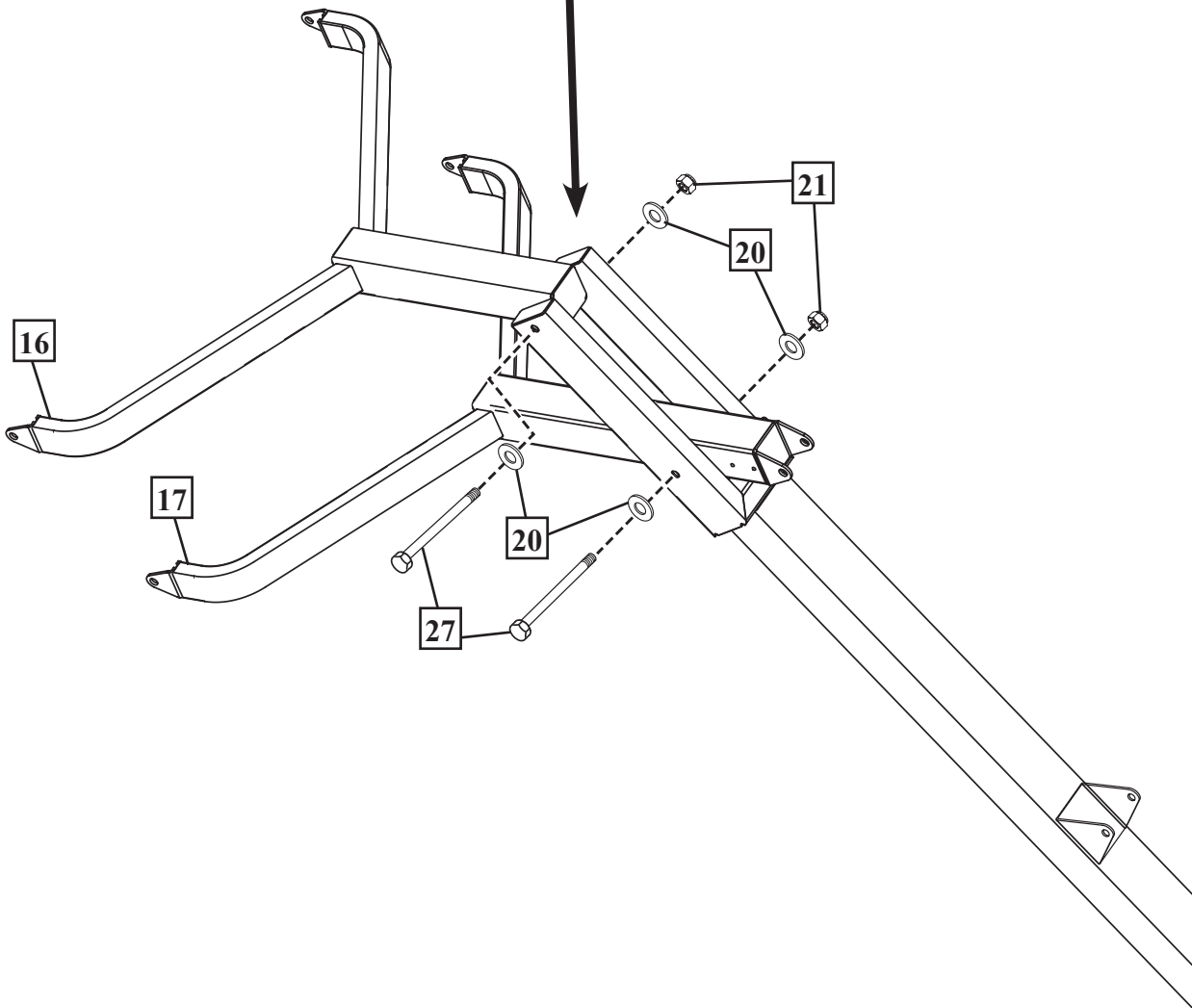
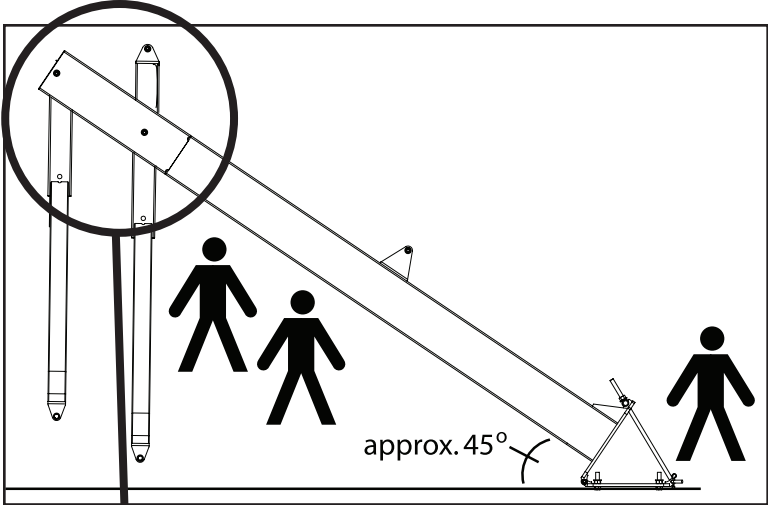
THREE CAPABLE ADULTS
REQUIRED FOR THIS
PROCEDURE. FAILURE
TO FOLLOW THIS
WARNING COULD RESULT
IN SERIOUS INJURY AND/
OR PROPERTY DAMAGE.



Completed Assembly

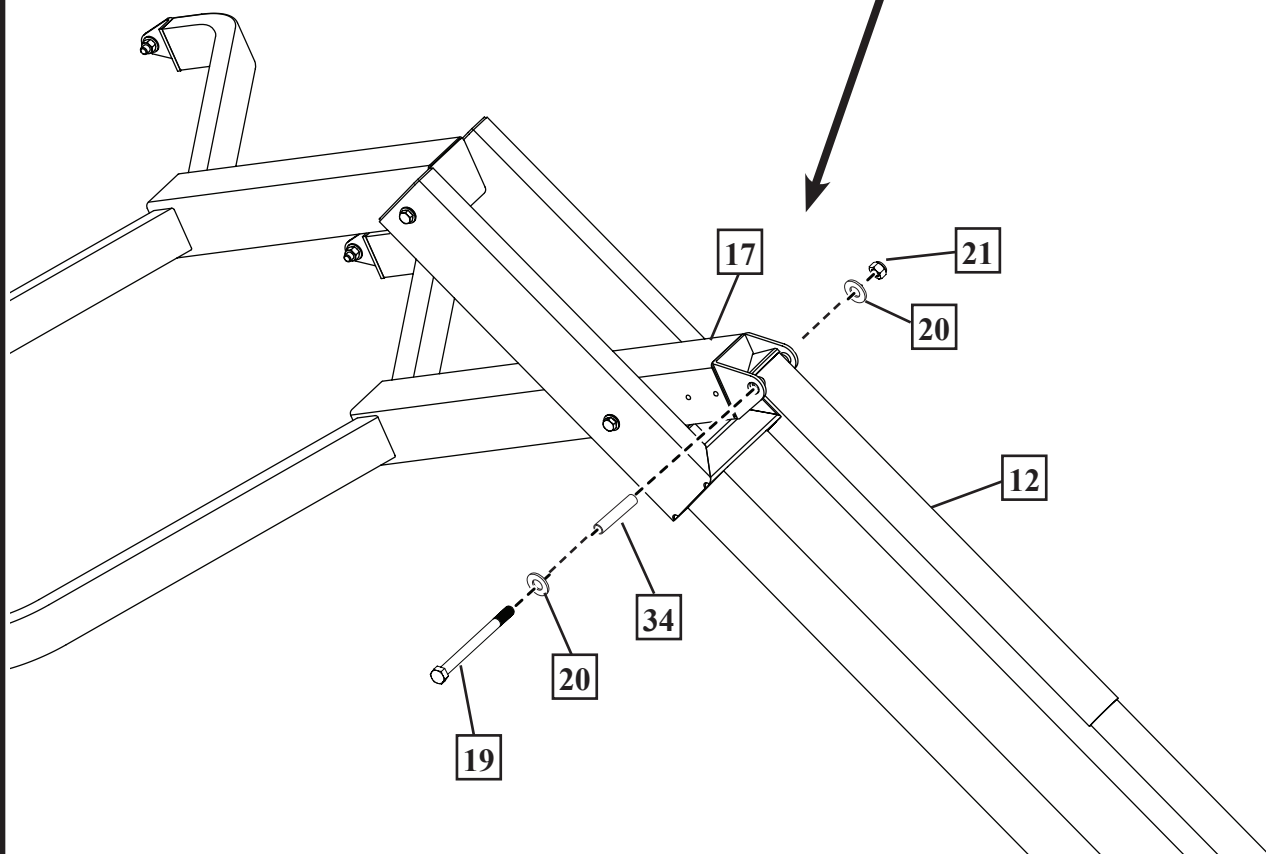
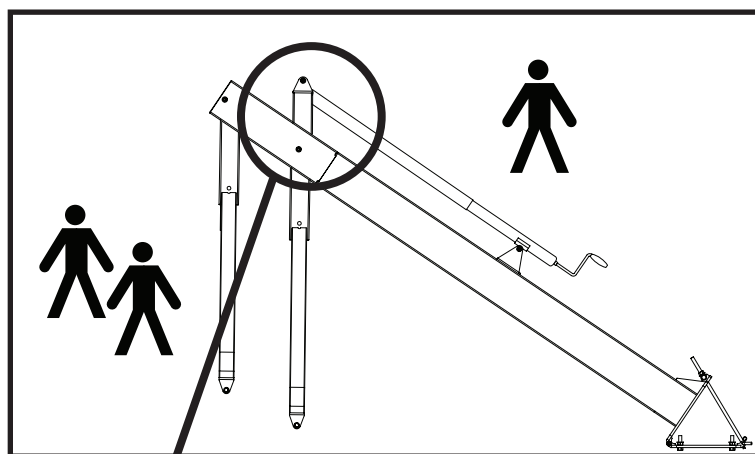


8. 



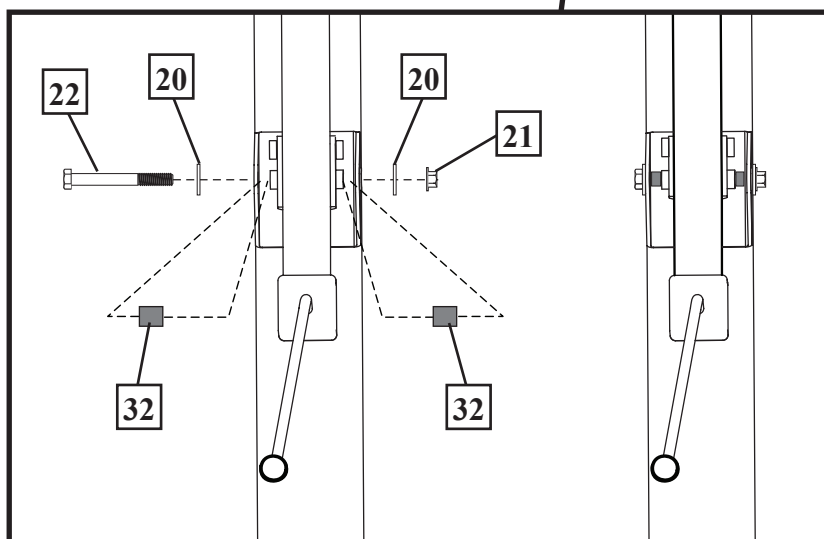
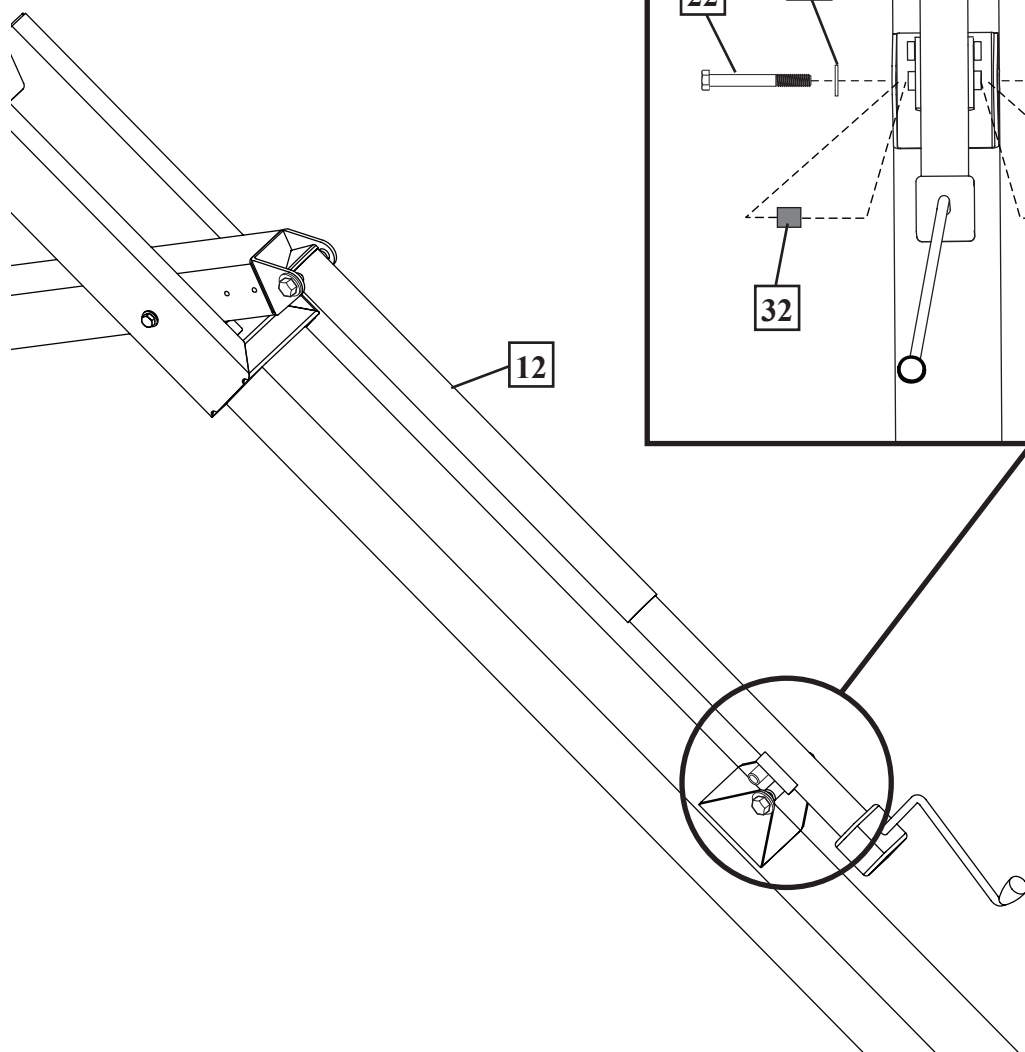
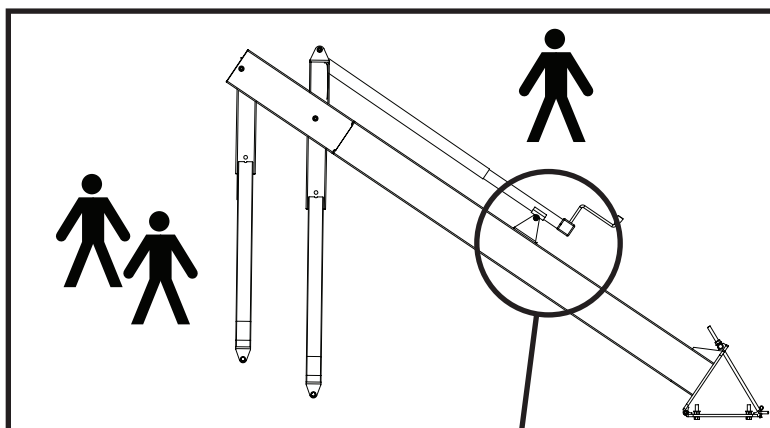
9.

Attach elevator adjustment (12) to lower yoke (17).



10.

While pole is being supported by **TWO** capable adults, attach elevator adjustment (12) to pole bracket.



IMPORTANT!:

FOLLOW THESE INSTRUCTIONS IF YOUR SYSTEM HAS A GLASS BACKBOARD - ONLY!



WARNING!



PLEASE ENSURE

THAT FOAM PAD IS PLACED ON TOP OF ALL 4 STEEL SPACERS AND HAS ADHERED TO GLASS OF THE BACKBOARD BEFORE ATTACHING YOKES.

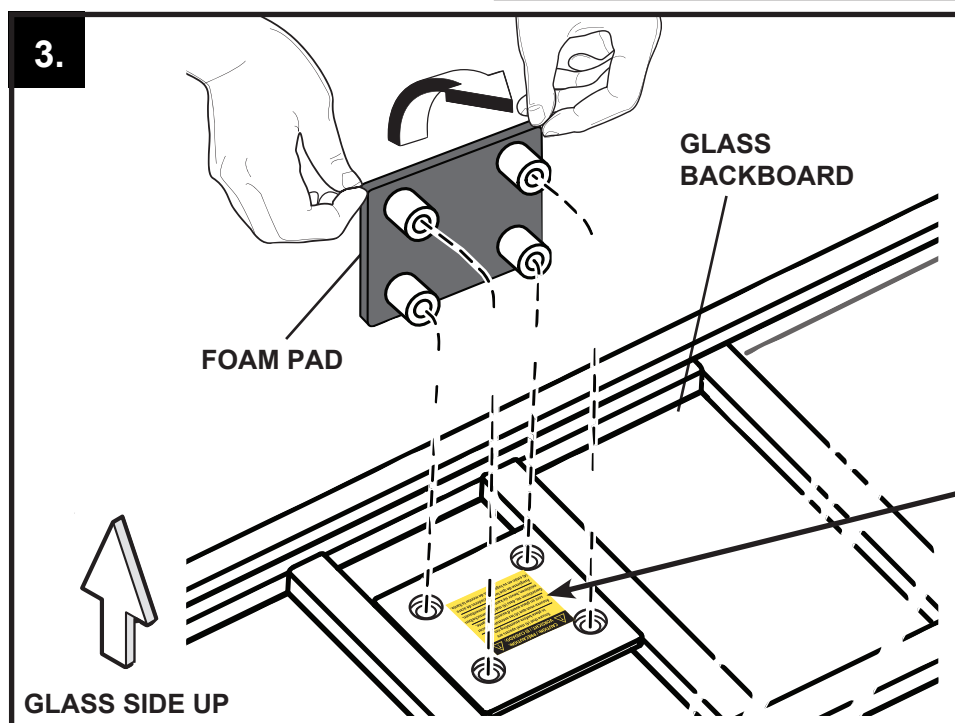
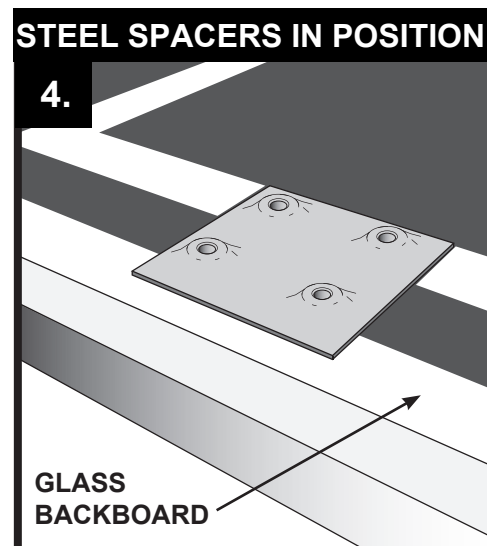
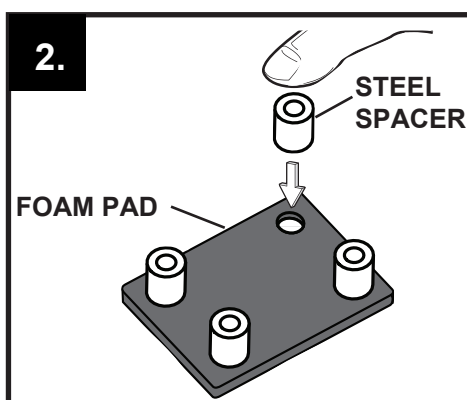
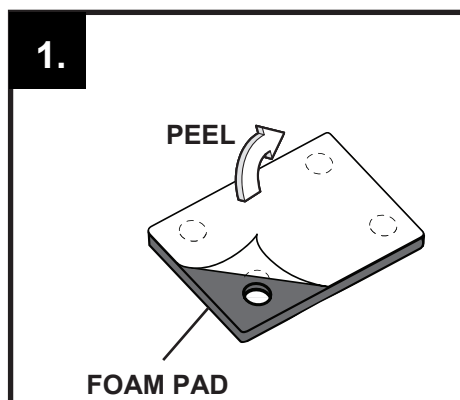
FAILURE TO FOLLOW THESE INSTRUCTIONS COULD RESULT IN PERSONAL INJURY OR DAMAGE TO PROPERTY.

STEP 1. Place foam pad onto a flat surface with the adhesive side facing up. Remove the protective film.

STEP 2. Individually align the (4) steel spacers with the (4) holes of the foam pad and firmly press the (4) steel spacers onto the adhesive surface of the foam pad .

STEP 3. Place the (4) steel spacers from the spacer and foam pad assembly created in step 2 into the mounting holes of the backboard. Firmly press the foam pad onto the glass of the backboard.

STEP 4. PLEASE ENSURE ALL (4) STEEL SPACERS ARE SECURED TO GLASS BACKBOARD UNDER FOAM PAD BEFORE ATTACHING YOKES TO BACKBOARD. (SEE FIG. 4)



CAUTION: / PRÉCAUTION: VORSICHT: / EI CUIDADO:

Ensure that (4) steel spacers are in place before assembling rim.

Assurez-vous que (4) les entretoises d'acier sont en place avant d'assembler la jante.

Garantieren sie, dass (4) stahl-distanzscheiben existieren, bevor sie kante zusammenbauen.

Asegúrese de que los espaciadores de acero (4) están en su lugar antes de montar la llanta.

12/12 P/N 500046

11.

Attach backboard (18) to upper and lower yokes (16 & 17).

A.

First attach backboard (18) to upper yoke (16), using **TWO** people to hold the backboard and **ONE** person to attach hardware (FIG. A). Use hardware as shown in FIG. B.

B.

Then, hinge board to match up with holes in lower yoke (17), FIG. C, and secure with hardware as shown in FIG. D.



WARNING!



THREE CAPABLE ADULTS
REQUIRED FOR THIS
PROCEDURE. FAILURE
TO FOLLOW THIS
WARNING COULD RESULT
IN SERIOUS INJURY AND/
OR PROPERTY DAMAGE.

FIG. A

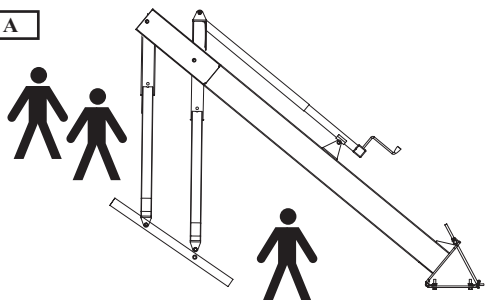


FIG. C

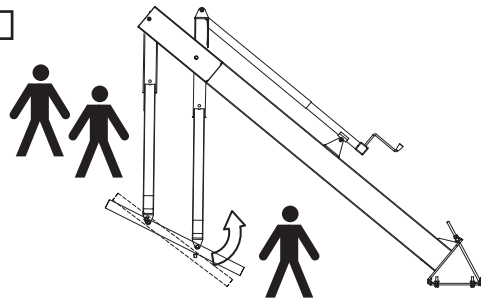


FIG. B

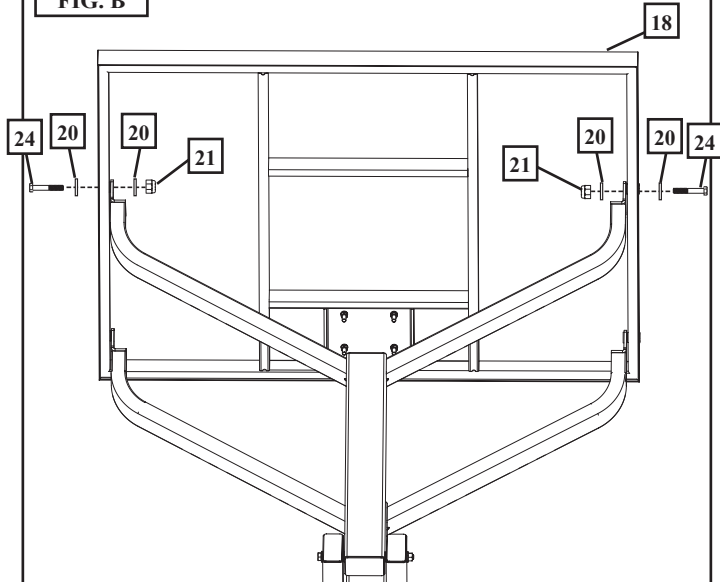
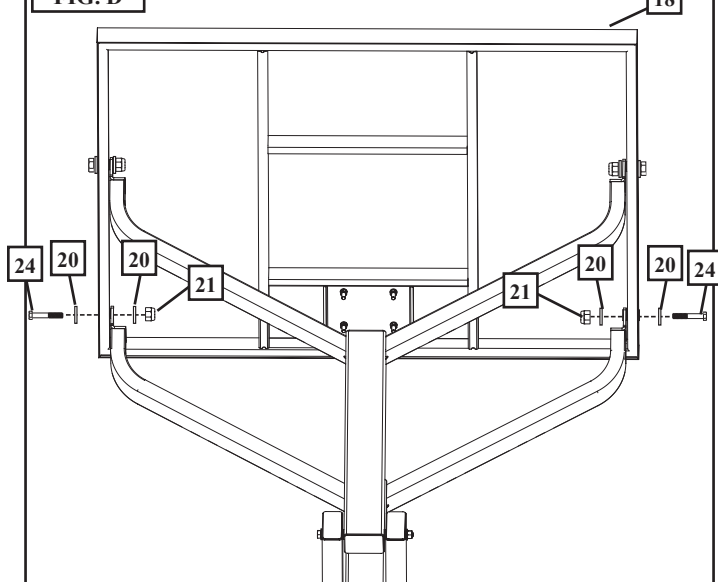


FIG. D





WARNING!



PLEASE ENSURE

THAT FOAM PAD IS PLACED ON TOP OF ALL 4 STEEL SPACERS AND HAS ADHERED TO GLASS OF THE BACKBOARD BEFORE ATTACHING YOKES.

FAILURE TO FOLLOW THESE INSTRUCTIONS COULD RESULT IN PERSONAL INJURY OR DAMAGE TO PROPERTY.

12. ●

Before starting rim assembly, tighten nut (25) until it is positioned 6-3/4" from the end of the rod (13) as shown (Figure A).

Remove rim cover (15), attach rim assembly (3) to backboard (18) using bolts (7 & 8) washers (26) foam pad (37) steel spacers (36) lock washers (6) and nuts (5) then reattach rim cover (15).

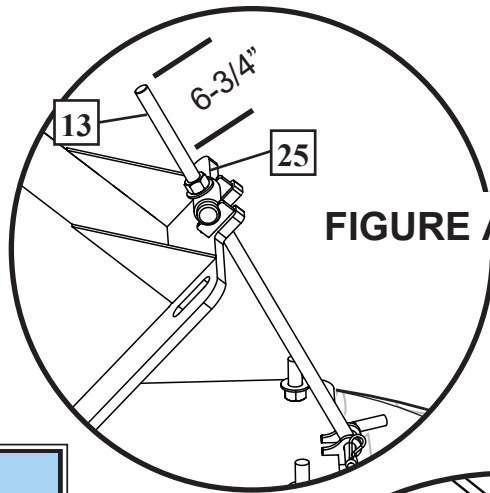


FIGURE A.



WARNING!



THREE CAPABLE ADULTS REQUIRED FOR THIS PROCEDURE. FAILURE TO FOLLOW THIS WARNING COULD RESULT IN SERIOUS INJURY AND/OR PROPERTY DAMAGE.

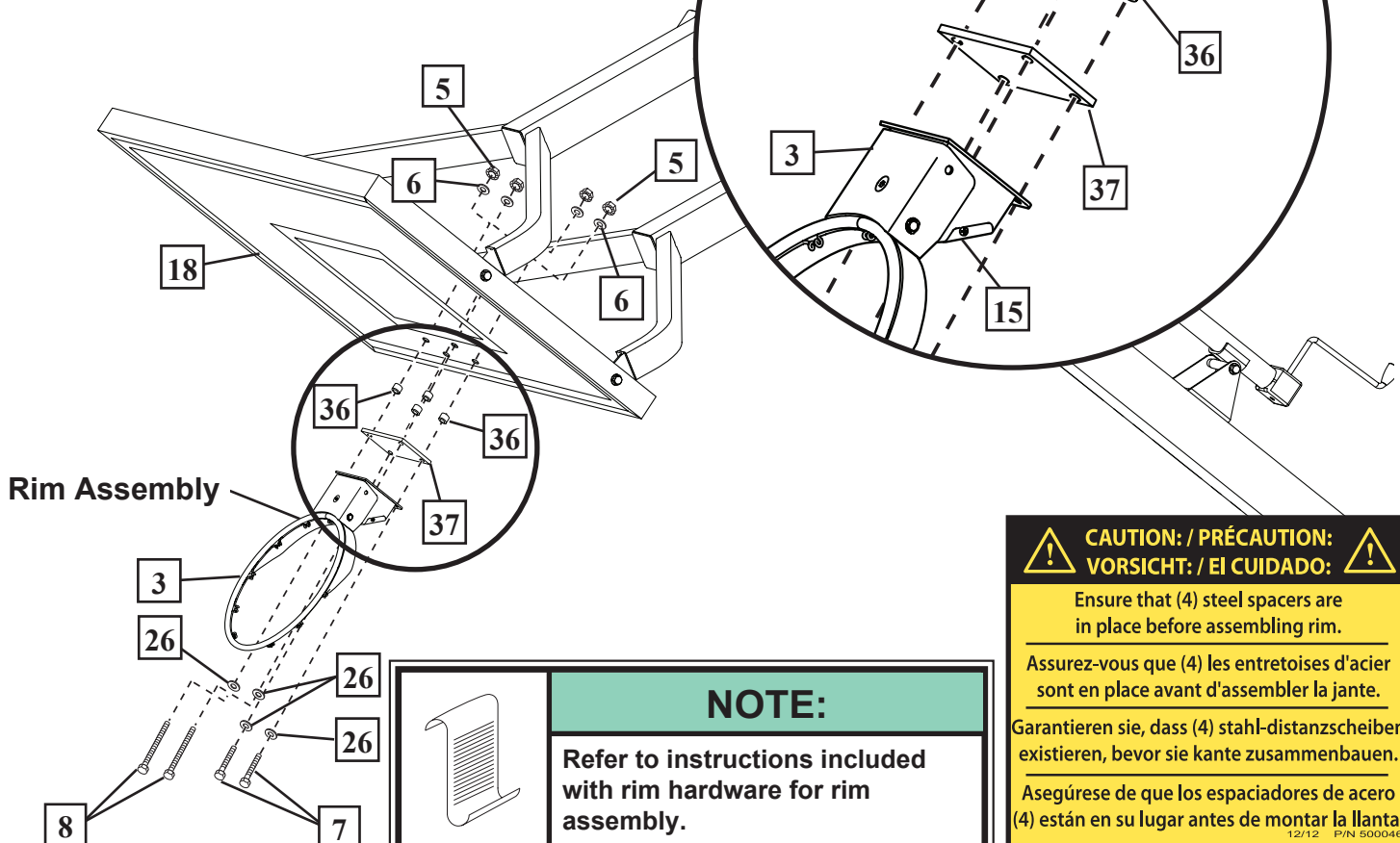


IMPORTANT!



POLYCARBONATE & ACRYLIC BOARDS:

Carefully cut and peel protective film away from board prior to attaching rim.



Rim Assembly

NOTE:

Refer to instructions included with rim hardware for rim assembly.



CAUTION: / PRÉCAUTION: / VORSICHT: / EL CUIDADO:



Ensure that (4) steel spacers are in place before assembling rim.

Assurez-vous que (4) les entretoises d'acier sont en place avant d'assembler la jante.

Garantieren sie, dass (4) stahl-distanzscheiben existieren, bevor sie kante zusammenbauen.

Asegúrese de que los espaciadores de acero (4) están en su lugar antes de montar la llanta.

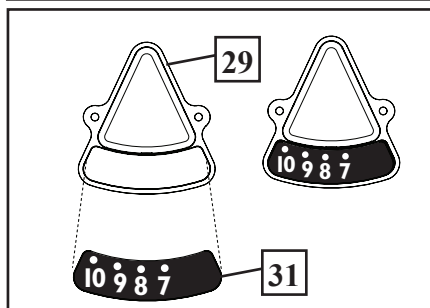
12/12 P/N 500046

13.

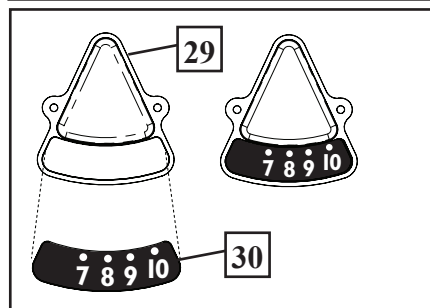
A.

Apply height indicator labels (30 & 31) to height indicators (29).

Set-up For Left Side

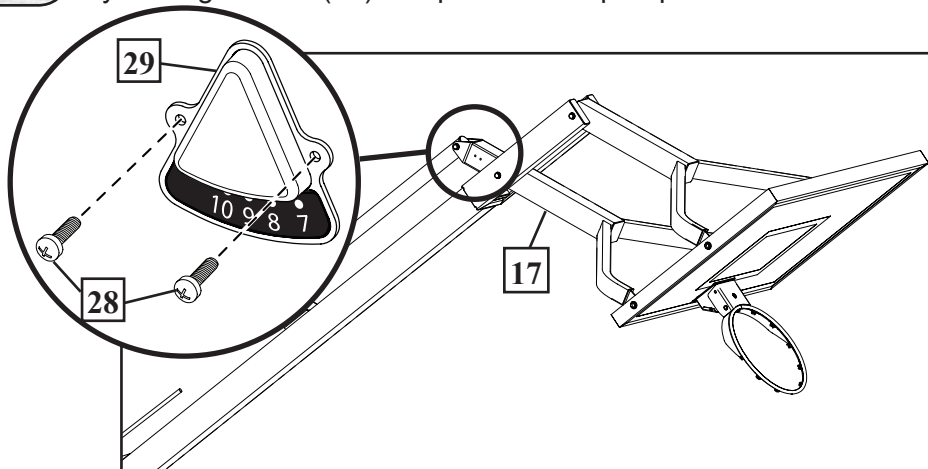


Set-up For Right Side



B.

Attach height indicator to left side of lower yoke (17) in area shown by turning screws (28) into place with a phillips-head screwdriver.

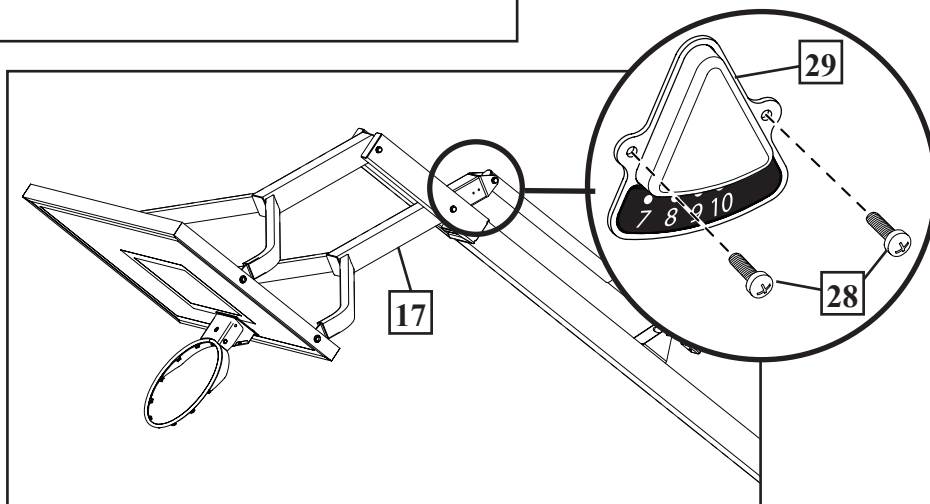


IMPORTANT!

NOTE ORIENTATION OF HEIGHT INDICATORS:
10' MARK SHOULD FACE AWAY FROM BACKBOARD.

C.

Attach height indicator to right side of lower yoke (17) in area shown by turning screws (28) into place with a phillips-head screwdriver.

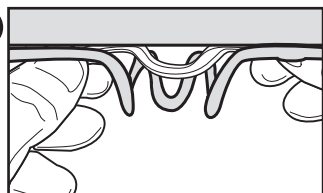


14.

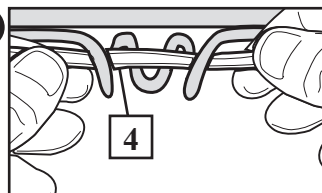
Install net (4) to rim as shown.

OUTSIDE VIEW

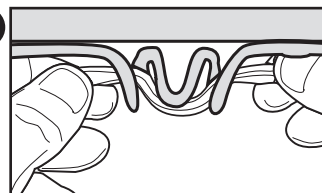
A.



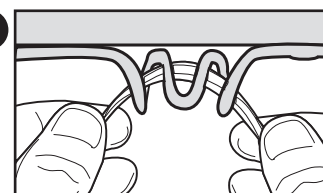
B.



C.



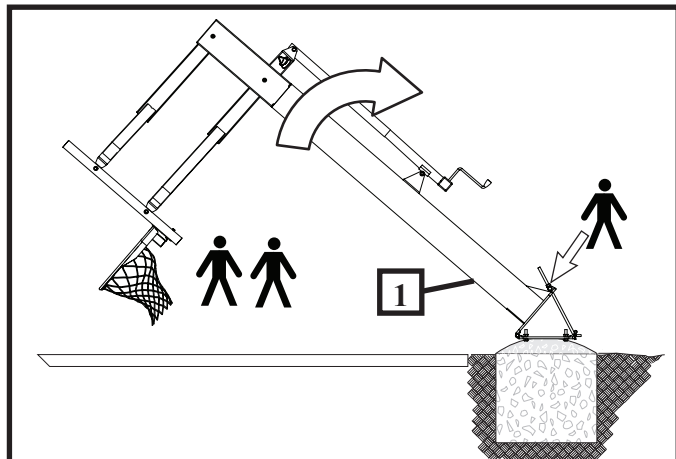
D.



15.

Upright pole (1) by tightening nut (25). Using 15/16" wrench, turn nut (25) clockwise to begin standing pole upright as **TWO** capable adults support and guide the pole as well as relieve pressure from nut (25). Continue to turn nut (25) until pole has come to rest against washers (23) and pole is vertical.

Once pole is in its final position and as **TWO** capable adults continue to support pole (1) install washers (23) and nuts (9) onto mounting bolts (18) and fully tighten to secure pole to anchor plate (2).

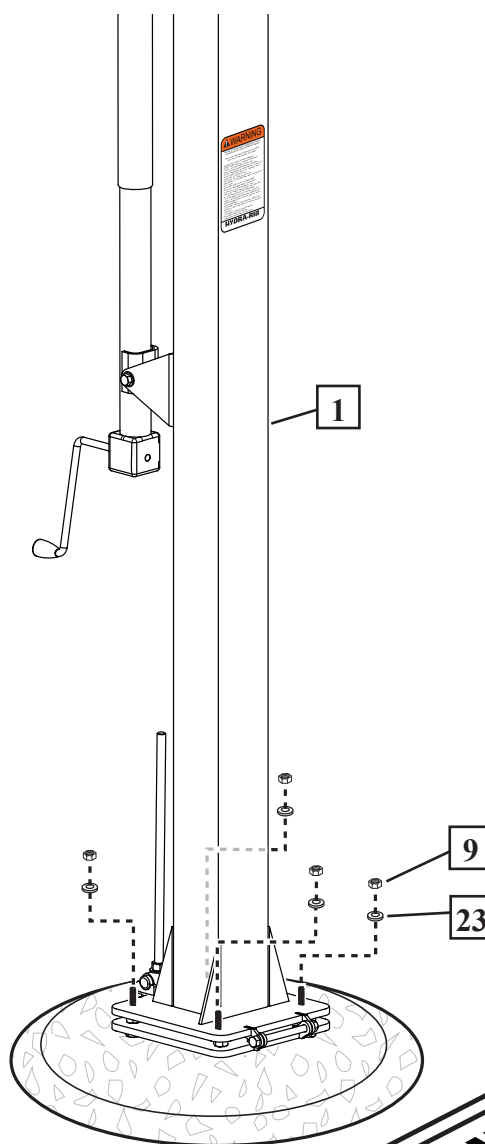
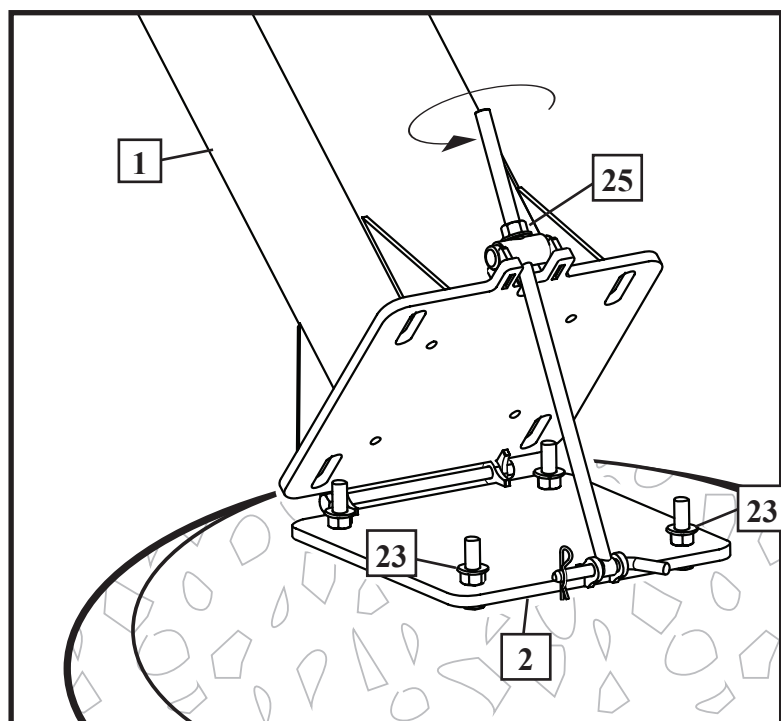


WARNING!



THREE CAPABLE ADULTS REQUIRED FOR THIS PROCEDURE. TWO PEOPLE ARE REQUIRED TO GUIDE AND SUPPORT THE SYSTEM WHILE THE THIRD PERSON IS TIGHTENING NUT (26) TO RAISE THE SYSTEM UPRIGHT.

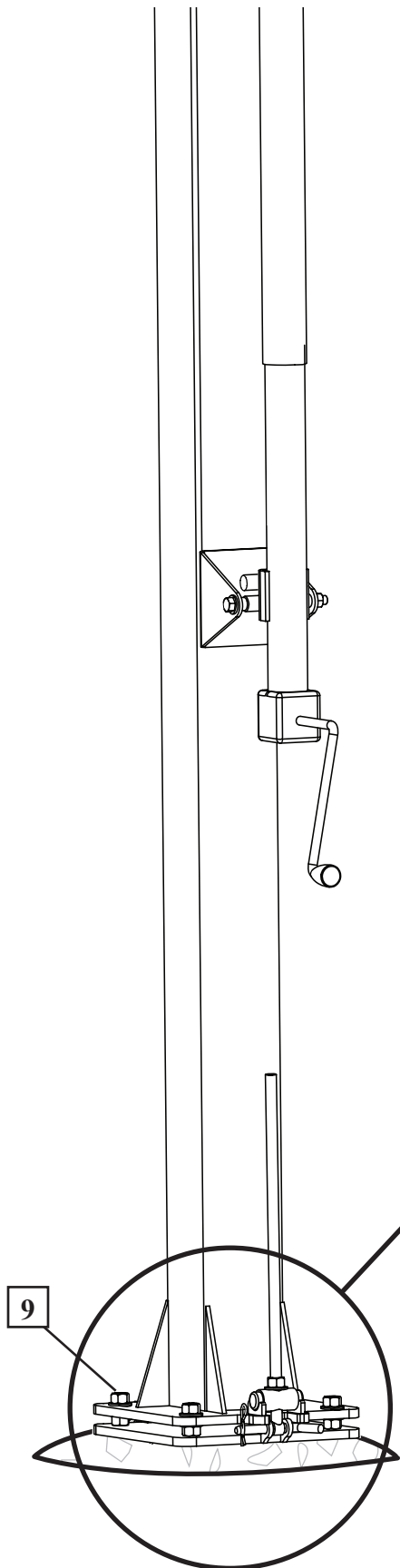
FAILURE TO FOLLOW THIS WARNING COULD RESULT IN SERIOUS INJURY AND/OR PROPERTY DAMAGE.



PLAYING SURFACE

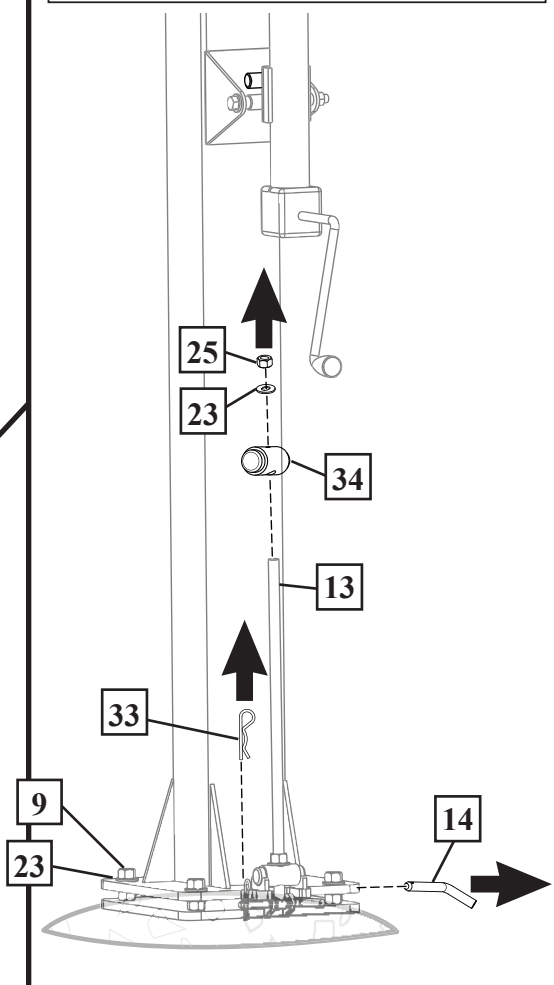
16.

After pole has been secured to the anchor plate loosen nut (25), remove cotter pin (33), and pull out pin (14). This will allow the removal of the threaded assembly rod (13) which is no longer necessary for the remainder of the assembly and installation of system.



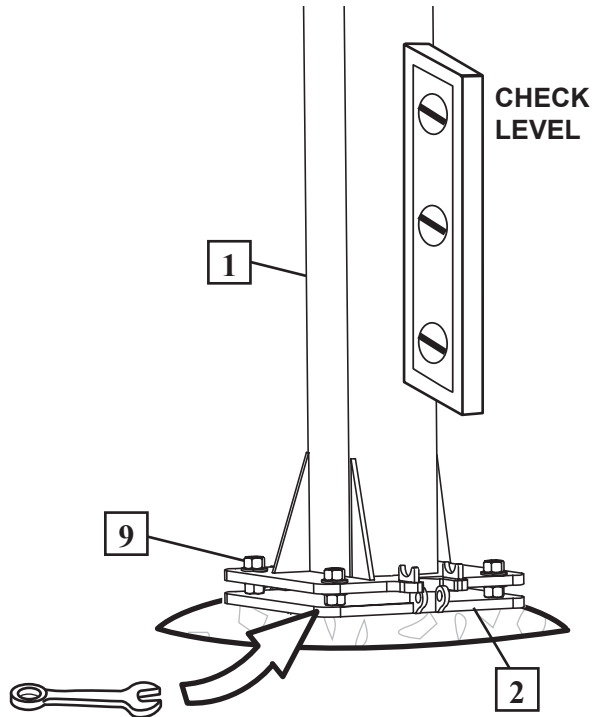
WARNING!

ONLY AFTER THE ANCHOR PLATE HAS BEEN FULLY TIGHTENED: Remove cotter pin (33) and pin (14) to remove threaded assembly rod (13) from anchor plate.

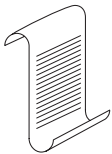


17.

Check system leveling.
Pole (1) should be level in all directions.
After system is leveled, completely tighten
all nuts (9).



NOTE:



If adjustment is
necessary, adjust
system by rotating
the nuts (9) between
anchor plate and
pole flange.

WARNING!



READ AND UNDERSTAND
WARNING & HEIGHT
ADJUSTMENT LABELS
BEFORE USING THIS UNIT.

FAILURE TO FOLLOW
OPERATING INSTRUCTIONS
COULD RESULT IN INJURY
OR DAMAGE TO PROPERTY.

18.

Apply height adjustment label (11).
Adjust system by turning crank until
desired height is reached per height
indicator (29).

